

Implant Installation Guide

Preparation



1. Astra Tech implants come with two implant-abutment connection sizes; small (aqua) for 3.5 S and 4.0 S implants and large (lilac) for 4.5, 5.0 and 5.0 S implants.

2. Peel off the perforated section of the label and use it for documentation and/or communication with your restorative partner.

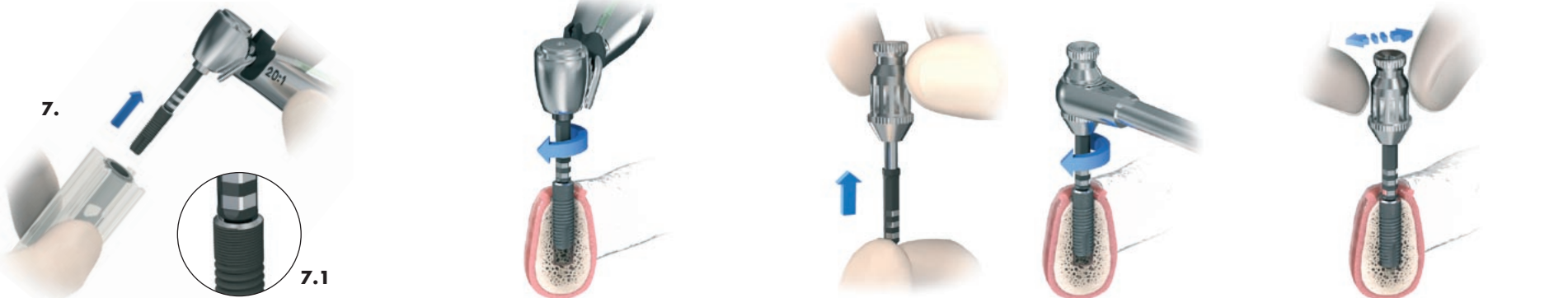
3. Remove the cap and peel off the foil protecting the sterile compartment.

4. Slide out the inner container onto a sterile field.

5. Lift the cap to expose the implant.

6. Attach an appropriate implant driver to a Contra Angle.

Installation



7. Tilt the container so that the full length of the implant rests against the container wall before picking it up. With an adequate friction grip, pick up the implant from the inner container.

7.1 Make sure that the driver is properly seated.

8. Install the implant with the Contra Angle at low speed (25 rpm) and a maximum torque of 35 Ncm, under profuse irrigation.

9. If desired, use the Ratchet Wrench in combination with the Driver Handle for the final seating of the implant.

10. Release the Implant Driver by shifting it slightly from side to side.